

- NOTE:
- 1) DIMENSIONS INCHES [mm].
 - 2) CONSULT FACTORY FOR CONDUIT SIZE AND QUANTITY ON SPECIFIC MODELS.
 - 3) COVER REMOVAL CLEARANCE = 2" [50.8 mm].

REVISIONS	D	18887	10/5/22	RB	PUBLIC THIS DRAWING AND ALL INFORMATION CONTAINED HEREIN IS THE PROPERTY OF AND IS SUBJECT TO CHANGE BY VALMET.
	C	16608	08/04/20	BK	
	B	9409	12-16-13	BL	
	REVISION	ECO	DATE	BY	

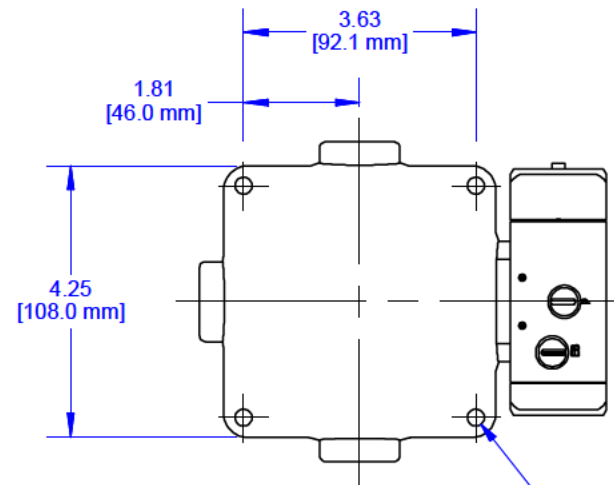
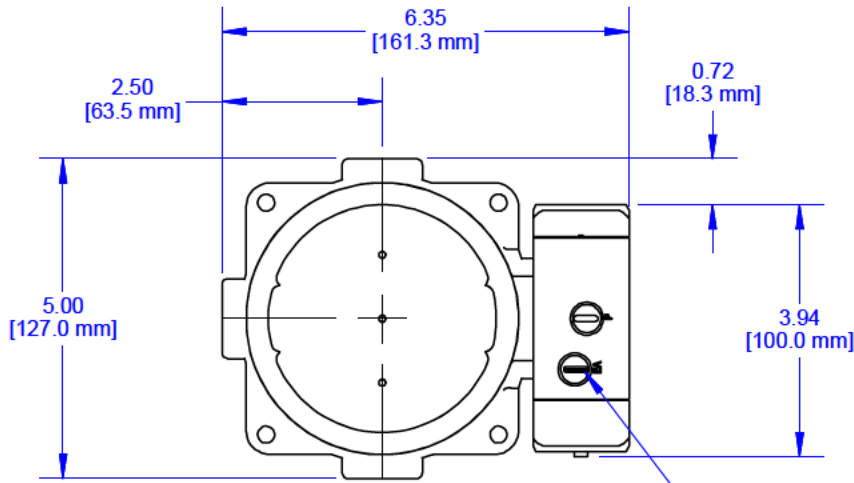
TOLERANCES* (UNLESS OTHERWISE SPECIFIED):		DR.	DB	TITLE	DIMENSIONAL DATA, JUNCTION MOD, JM	
X.XXX ± .005	ANGLES ± 0° 30'	CHK.	MB	SCALE	1:3	SHEET 1 OF 2
X.XX ± .010	FINISH f 125 RMS	APPD.	RA	SIZE	A	DATE 1/25/2012
X/X ± .015	*DIMENSIONS: INCHES (UNLESS OTHERWISE SPECIFIED)					



FERGUS FALLS, MN 56537 USA

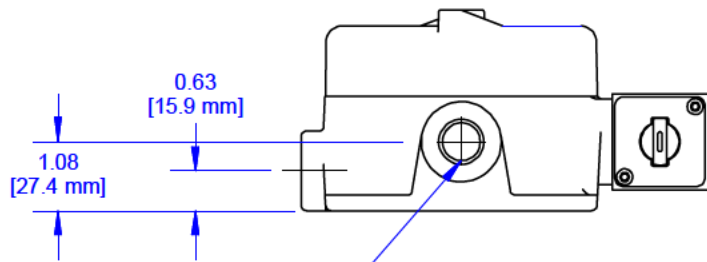
CERTIFIED TO BE DIMENSIONALLY CORRECT.

DRAWING NO.	REV.
500130	D

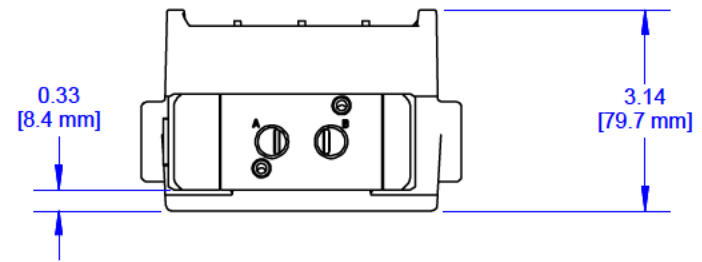


SEE NOTE 2

$\phi 0.27$ THRU (4X)




SEE NOTE 2



NOTE:

- 1) DIMENSIONS INCHES [mm].
- 2) CONSULT FACTORY FOR CONDUIT SIZE AND QUANTITY ON SPECIFIC MODELS.
- 3) COVER REMOVAL CLEARANCE = 2" [50.8 mm].

REVISIONS	D	18887	10/5/22	RB	PUBLIC THIS DRAWING AND ALL INFORMATION CONTAINED HEREIN IS THE PROPERTY OF AND IS SUBJECT TO CHANGE BY VALMET.	 FERGUS FALLS, MN 56537 USA			
	C	16608	08/04/20	BK					
	B	9409	12-16-13	BL					
	REVISION	ECO	DATE	BY					
TOLERANCES* (UNLESS OTHERWISE SPECIFIED): X.XXX ± .005 ANGLES ± 0° 30' X.XX ± .010 FINISH f 125 RMS X/X ± .015 *DIMENSIONS: INCHES (UNLESS OTHERWISE SPECIFIED)					DR. DB	TITLE DIMENSIONAL DATA, JUNCTION MOD, JM			
<div style="border: 1px solid black; padding: 2px; width: fit-content;">CERTIFIED TO BE DIMENSIONALLY CORRECT.</div>					CHK. MB	SCALE 1:3	SHEET 2 OF 2	DRAWING NO.	REV.
					APPD. RA	SIZE A	DATE 1/25/2012	500130	D